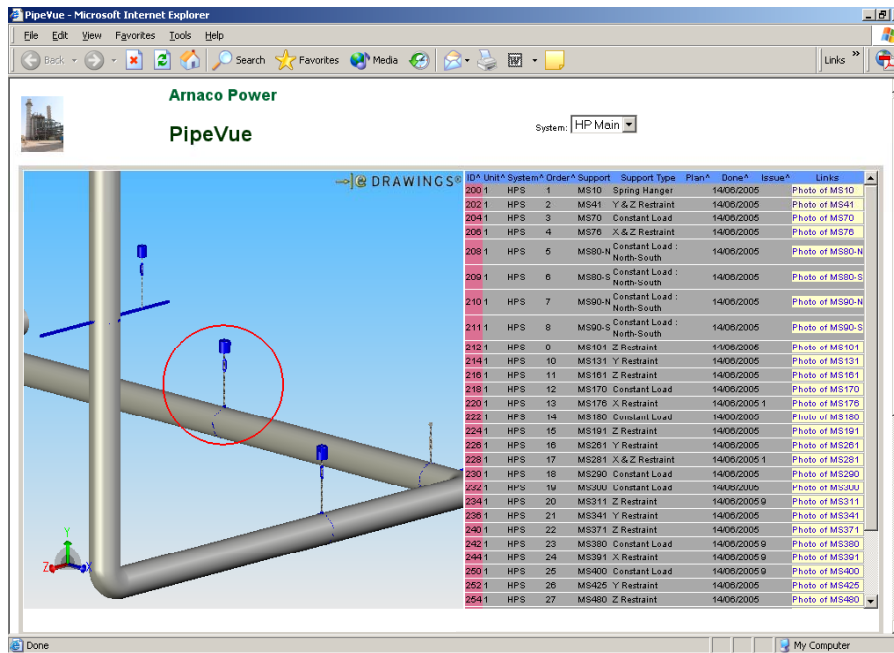




PipeVue

PipeVue Delivers a "3-D Database" Of Your Pipe Inspection Data

Close monitoring of the condition of piping and pipe supports is an essential element in identifying potential problems before they lead to unnecessary shutdowns or increased safety risks. Our PipeVue tool provides plant operators with a low-cost and standardised alternative for tracking the condition of the piping and pipe supports. It is delivered pre-configured and populated with your plant piping inspection data.

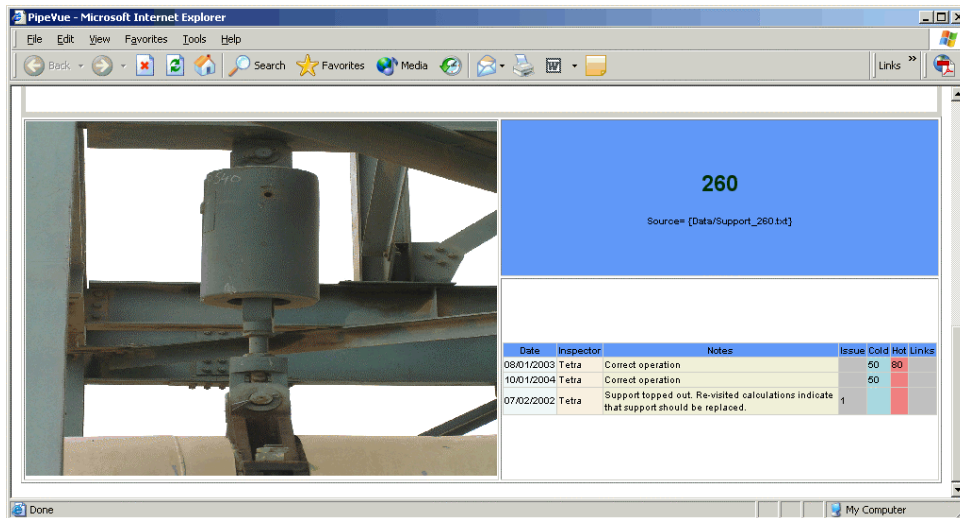


Get Quick Access to 3-D Piping Views, Item Descriptions and Inspection Data

- Filter, sort and search using the index view of the database that lists piping supports and "issue" records, with issues defined as any observation from inspections or remark relevant to a particular point on the piping
- Greatly enhances traceability and only requires MS Internet Explorer, no server necessary.
- Quickly see when the last inspection was performed and when the next one is planned
- Quickly see where the problem areas are by scanning locations of "issues"
- Click the entry to bring up the more detailed Item Report
- Item reports show full details and history of the pipe support or issue at the location.
- Includes 3D views of the piping elements that clearly show the piping support type and location. Use "issue" records to describe damaged pipe or insulation sections, weld repairs or record NDT readings for a particular location.



- Includes system specifications, locations, size, type, current and past settings, and drawing references.
- Other links can be added to access the inspection reports and digital photos.



What piping systems can be included?

PipeVue is primarily aimed at high-energy piping at thermal power plants. This typically encompasses the major high-pressure steam lines running between the boiler or HRSG to the steam turbine. Drains, vents and other minor lines are usually excluded. Depending on the type of plant, this could include the following systems:

HP Steam
Hot Reheat Steam
Cold Reheat Steam

IP Steam
LP Steam
HP Feedwater

What data do we need?

Initially the client will need to send isometric drawings of the pipe systems and prior inspection data (if any), either in electronic or hardcopy format. Tetra Engineering will prepare the piping models and associated pre-formatted spreadsheet with a number of fields for data entry. There are fields to enter a brief description of the pipe support type (constant load, spring support, fixed support etc.) at a given location and reference drawing numbers or other plant identifiers. There are also fields for recording inspection data for the pipe supports (recorded settings at hot and cold, limit values) and observations if it is an issue record. One can include file names of digital photographs and inspection reports if desired.

PipeVue is delivered as part of the final report for our Piping Assessment service. A client can also procure the tool separately, whereby we will enter any historical inspection data sent by the client into the database. For subsequent updates, clients would only need to send us their latest inspection data (support settings, new observations etc.).

To obtain more information and a demo please contact our offices in either the USA or France.

USA:

Tetra Engineering Group Inc.
110 Hopmeadow St.
Weatogue, CT. 06089
Tel. +1-860-651-4622 Fax +1-860-651-5524

Europe:

Tetra Engineering (Europe) S.A.R.L.
Immeuble Petra A, B.P. 272
06905 Sophia Antipolis, France
Tel.+33 (0)4 92 96 92 54 Fax +33 (0)4 92 96 92 55