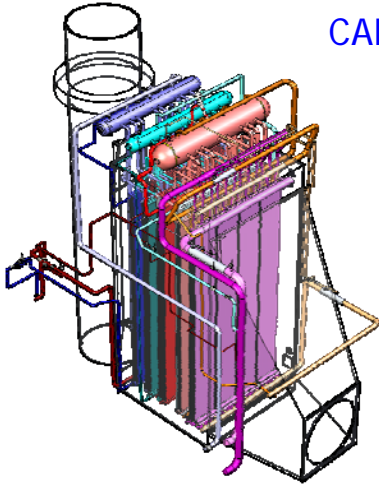




CARDS Plus 3-D Knowledge Management System

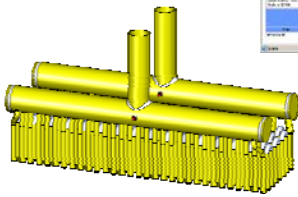
CARDS+ – Component Assessment Reporting & Display System



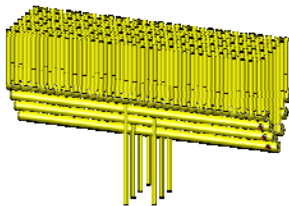
CARDS+ is designed to save engineers time and enhance traceability by providing an integrated reporting and viewing system that is accessible to a wide range of users.

Developed for the power generation industry, the system lends itself to any application where the condition and reliability of complex and high value or highly critical components needs to be documented and communicated.

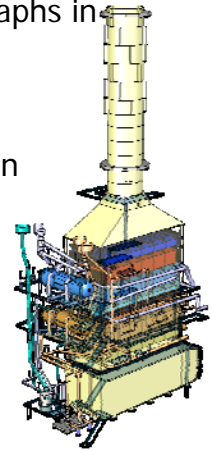
CARDS+ uses MS Internet Explorer and common office tools - no special software or hardware is required!



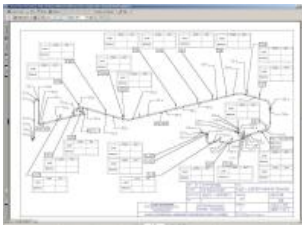
- Whole Plant, GTs, HRSGs, Piping
- Sub-components (Headers, Drains)
- Detail down to weld level



- **Compliance** – show that equipment is maintained correctly
- **Collation** – have all reports, drawings and photographs in one location
- **Communications** – show and discuss complex components in 3D
- **Convenience** – follow logical links to historical data and files; filter and sort content to quickly find “problem” areas.



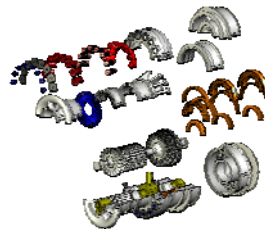
Major benefits are savings in time and improved communications / traceability



New 3D scale drawings for rapid communication and note taking



Links to drawing, photographs and reports



Suitable for any complex equipment



CARDS+ Mobile – Use CARDS in the field...

USA:

Tetra Engineering Group Inc.
110 Hopmeadow St.
Weatogue, CT. 06089
Tel. +1-860-651-4622 Fax +1-860-651-5524

Europe:

Tetra Engineering (Europe) S.A.R.L.
Immeuble Petra A, B.P. 272
06905 Sophia Antipolis, France
Tel. +33 (0)4 92 96 92 54 Fax +33 (0)4 92 96 92 55

www.tetra-eng.com - sales@tetra-eng.com